



# ANNUAL REPORT 2024

Early Detection  
Isn't Luck.  
It's a Skill.

We're Teaching It.  
And So Many Are  
Alive Because of It.

**DetecTogether**

SAVING LIVES THROUGH  
EARLY CANCER DETECTION

# MAKING AN IMPACT – PARTICIPANTS TAKING LIFE-SAVING ACTION

OUR SURVEY OF 3 STEPS DETECT® PARTICIPANTS SHOWS THE UNMISTAKABLE IMPACT OF YOUR SUPPORT: **68% PUT THE TRAINING INTO PRACTICE; 82% FEEL MORE CONFIDENT COLLABORATING WITH THEIR DOCTORS; 42% SOUGHT MEDICAL CARE AFTER NOTICING A CHANGE; OF THOSE 19% CAUGHT A HEALTH ISSUE EARLIER; 64% OF THOSE EARLY DETECTIONS WERE CANCER**

we're  
making  
an  
impact  
together



When people know what to look for, they take action sooner, and lives are saved.

Behind every percentage is a person who didn't wait. A person who recognized a change, spoke up, and got care early enough to change the ending of their story.

Your support makes that possible.

## A MESSAGE FROM OUR LEADERSHIP TEAM

**Early detection isn't luck. It's a skill. And because of you, more people have that skill today than ever before.**

Every day, we meet people who did what most of us do when something feels “off”—they waited, hoped it would go away, were busy, or didn't want to be “a bother.” Too often, that wait costs precious time and leads to a diagnosis that comes too late. DetecTogether exists to change that story.

In 2024, we continued to teach **3 Steps Detect**<sup>®</sup> to the people who need it most: firefighters facing elevated cancer risks; young adults whose cancer rates are rising and whose symptoms are often dismissed; and employees juggling work, family, and their own health. Survey results confirmed what we hear in their stories: people are using what they learn to recognize changes, speak up sooner, and get care in time.

Because of your support, more people understand their “great health,” use the 2-week rule, and collaborate confidently with their medical providers. These actions can change the course of their lives. Awareness is turning into action, and action is leading to earlier diagnoses and better outcomes.

This year, we also strengthened the organization for the future. We invested in strategic planning and key leadership to expand our reach and deepen our impact. And we welcomed Patrick McCarty as our newly elected Board Chair, a leader whose experience and commitment to this mission are already guiding our next chapter of growth. These steps ensure that DetecTogether remains strong, focused, and ready to meet the rising need for early detection education nationwide.

**Thank you for standing with us, for believing that delayed diagnoses are not inevitable, and for helping make early detection a skill people carry with them for life. Together, we are changing stories—and saving lives.**

With Gratitude,



Jim Coghlin  
Founder



Nancy Coghlin  
Founder



Patrick McCarty  
Board Chair



Tricia Laursen  
President

## BOARD OF DIRECTORS

**Karen Albritton, MD**  
*Cook Children's Medical Center—Fort Worth, TX*

**Jim Coghlin Sr.**  
*Chairman, Coghlin Cos., Inc.*

**Chris Coghlin**  
*President/CEO and Chief Culture Officer,  
Coghlin Companies, Inc.*

**Eric Coghlin**  
*Director in Equity Capital Markets, Bank of America*

**Michael Davin**  
*Entrepreneur*

**Peter Deckers, MD**  
*Dean Emeritus, University of Connecticut's  
School of Medicine*

**Bill Durgin**  
*Management and Investment Consultant*

**Tricia Laursen**  
*President & Clerk*

**Patrick McCarty, PE**  
*President, McCarty Companies*

**Chris Palermo, CPA**  
*Chief Financial Officer, Coghlin Companies  
General Manager Columbia Tech*



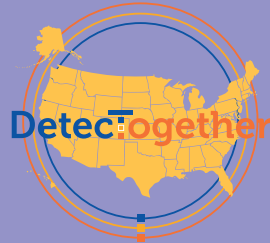
# BRINGING LIFESAVING **EARLY DETECTION** SKILLS TO **FIREFIIGHTERS**

Across the United States, firefighters aren't just being trained – they're taking action and catching cancer early.

Firefighters face significantly higher cancer risks not because they ignore danger, but because symptoms hide in busy lives. DetecTogether gives them the clarity and confidence to recognize when something is wrong and act early, before cancer becomes advanced.

# 50

states have been reached through our online learning program.



## Houston, TX Fire Department

**Houston Fire Department**, the 3<sup>rd</sup> largest fire department in the United States, embarked upon a major initiative to train 100 of its District Training Officers in 3 Steps Detect<sup>®</sup>. HFD's goal was to bring this lifesaving education to every firefighter in Houston, ensuring their members know what to look for and when to act.

**3,800** firefighters (100% of the department) received **3 Steps Detect** training.



## Train the Trainer

Our Train the Trainer program is taught face-to-face, equipping boots-on-the-ground firefighters to teach the Response Time Matters in Early Cancer Detection program to the members of their own departments. By providing practical tools and ready-to-use materials, we empower firefighters to lead ongoing conversations about early detection within their stations.

## Westminster, CO Fire Department



**150** firefighters (100% of the department) received **3 Steps Detect** training

## What Firefighters Are Saying

**"We are constantly hammered with information about cancer prevention, but this training was different — it gave us a clear process and made it personal. It really sticks."**

– Sandwich, MA Firefighter

**"I know too many that have had cancer. The course quickly hit home and reminded us that ignoring symptoms can be deadly."**

– Houston, TX Firefighter

### From someone who knows:

“ I know how lucky I am to have caught this early, and I know others have not been as lucky... I try to make the most of my time, especially with my loved ones. ”

**Kara Shemeth**

DIAGNOSED AT 42, BREAST CANCER



# PROTECTING THOSE WHO PROTECT US

## Paragus Firehouse Cook-off

At the third annual Paragus Firehouse Cookoff, DetecTogether was honored to be one of the charitable beneficiaries. The event wasn't just about great food, it rallied firefighters and community members around the urgent need for early cancer detection. Their support helps us bring lifesaving education to more fire departments, ensuring firefighters know when a symptom matters and when to act.



## DetecTogether at FDIC 2024

Each year, more than 38,000 firefighters gather at FDIC International, the largest conference of its kind. DetecTogether participated in 2024 to ensure early detection remains a vital part of the national conversation around firefighter health. By connecting with departments from across the country, we continue expanding the reach of lifesaving education that helps firefighters act sooner and catch health issues before they become serious.



## Where else in the firefighting world was DetecTogether in 2024?



PFF Maine Conference



Nat'l Fire Academy

IAFF Skin Screening



Plymouth, NH



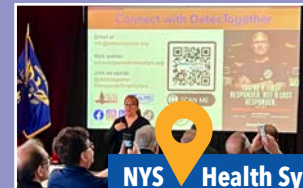
Worcester Fire Academy



Pasadena, TX



Patriots Training Camp



NYS Health Symposium



Indianapolis Fire Dept.

## From someone who knows:

“ I want to make sure no one else waits to get checked when they experience symptoms. ”

**Trey Foust**

DIAGNOSED AT 32, TESTICULAR CANCER





# PREPARING YOUNG ADULTS TO CATCH CANCER BEFORE ANYONE MISSES IT

**400%** increase in teachers using the curriculum across the country since 2023

**2x** the number of teachers using the online learning platform since 2023



Assabet Valley Technical High School, Marlborough, MA



Bancroft School, Worcester, MA



Doherty High School, Worcester, MA

## The Young Adult Program

Students are learning how to notice symptoms, speak up, and get care in time — skills that will serve them for life and protect their health for years to come.

Cancer rates in young adults are rising, yet symptoms are frequently missed or dismissed. DetecTogether gives students the lifelong tools to understand their bodies, recognize when a symptom requires attention, and confidently advocate for care. These skills stay with them well beyond the classroom, offering life-saving benefits again and again.

## What Students Are Saying

**“I rated it a 10 because the presentation tackled really important things that we need to pay attention to. If we’re experiencing symptoms, even if they’re small, we should not ignore them.”**

*Tyra – Massachusetts High School Student*

**“I have a history of having breast tumors as a 15 year old, and this presentation helped me identify that something was wrong. Others should be aware so they can catch something as early as I did!”**

*Lauren – Massachusetts High School Student*



### From someone who knows:

“Tune into your health to be aware of what is normal for you. It is so important to know how you feel when you feel great and use the 2-week rule if you notice a change in your health – don’t just ignore it!”

**Ashley Iwanski**  
DIAGNOSED AT 18, LYMPHOMA





## Workplace Wellbeing Program

This Program helps organizations and their teams take a proactive approach to managing their health by teaching employees the skills to recognize when something isn't right and act sooner. With nearly two in five people expected to face a cancer diagnosis in their lifetime, early detection not only improves outcomes — it also reduces the emotional and financial burden on individuals and employer-sponsored benefits. Through **3 Steps Detect®**, employees learn lifelong habits that help them spot early indicators of potential health concerns, increasing the likelihood of earlier diagnosis and, in many cases, simpler and more cost-effective treatment.

We provide a range of training options designed to fit different workplace environments—from live webinars to on-demand courses and interactive educational materials. Together, these tools help cultivate a culture of health awareness and safety, reinforcing how critical early detection is to long-term well-being for both employees and the organizations they support.

## Workplace Partners (a sampling)



## What Employees Are Saying

**“The facts are laid out nicely and allow people to easily recognize the importance of paying attention to their own health and symptoms.”**

*Men's Club Participant*

**“I have lost several family members to cancer — this presentation really resonated. It reminded me how important it is to listen to your body and act early.”**

*TJX Employee*

**“Sandy was amazing. It was really touching that she shared personal stories that made the topic real and not just another health talk.”**

*Workplace Attendee*

**“Good reminder of putting yourself first. We all get busy and forget how important it is to notice changes and make that doctor's appointment.”**

*MA Bankers Employee*



**Team UniBank is healthier and our healthcare premiums have dropped significantly thanks to lifesaving 3 Steps Detect®.**

Michael Welch  
CEO UniBank

**1 Know Your Great**  
Set a **baseline** for your normal  
Get your **annual physical**  
Go for recommended **screenings**  
Perform monthly **self-exams**  
**BE AWARE** of your body's signals

**3 Share with Your Doctor**

**Prepare for appointments**

- Write it down & prioritize
- Take resources with you
- Bring a trusted person

**The most common cancer symptom is...**

**A subtle, persistent health change lasting 2 weeks or more.**

**Program delivered through webinars, on-demand courses, and interactive educational materials**

### From someone who knows:

**“ Learn how to do a testicular self-exam. If you notice something wrong, or any symptom that persists for longer than two weeks, go see your doctor. ”**

**Keith Denham**

DIAGNOSED AT 34, TESTICULAR CANCER





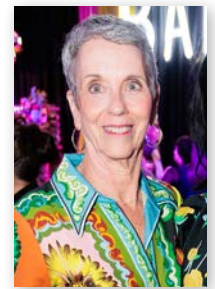
# CHAMPIONS WHO FUEL OUR MISSION



Golf Fights Cancer chose DetecTogether as a 2024 "Cause of Choice," directing vital support to our early detection mission. Their commitment helps us bring lifesaving education to more people at risk of delayed diagnoses. The event blended community, generosity, and purpose creating meaningful momentum for our work.



We thank these and the many other people and organizations who stand with us in this mission.



Thank You, Deidre Quealey

## From someone who knows:

“ Take advantage of the screenings and early detection systems that are being offered. Also, keep in shape, to make sure your body is ready to recover. Today, I’m cancer-free because of early detection ”

### Joe Marchetti

DIAGNOSED AT 45 AND 47, PROSTATE AND SKIN CANCER, RESPECTIVELY  
DETECTOGETHER 3 STEPS DETECT® TRAINER





**The Boston Marathon**



**The NYC Marathon**



**Golf Fights Cancer Marathon**



**From someone who knows:**

“ I am so honored to run for DetecTogether! I am a skin cancer survivor and I owe my status to early detection. Thank you for everything you do. ”

**Tina Marabello**

SKIN CANCER SURVIVOR AND DETECTOGETHER CHARITY ATHLETE



Almost **\$2M** raised!

DetecTogether has become a desired organization for charity athletes to look toward—for a place on our team! Each year we receive more requests that we can accept—to wear a bib for DetecTogether. Since 2012, Team DetecTogether charity athletes have raised close to \$2 million for early cancer detection. Just as important as the dollars raised is the awareness Team DetecTogether brings to life-saving early cancer detection.

**The Falmouth Road Race**



# CELEBRATING THE SUPPORT THAT SAVES LIVES

**\$1M+** raised!

PRESENTING: **CMP** ADVANCED MECHANIC SOLUTION

GALA: **POWERTECH** CONTROLS CO., INC.

GOLF TOURNAMENT: **1A AUTO** QUALITY AUTO PARTS

RECEPTION & ENTERTAINMENT: **SUBARU OF NEW ENGLAND**

PLATINUM: **MCGOVERN** AUTOMOTIVE GROUP

VALET: **WAGNER MOTORS** KIA SPRINTER MERCEDES WAGNER

SIGNATURE DRINK: **LOVE. Tito's** Handmade Vodka

TOURNAMENT LUNCH: **Tammy & Eric Smyrl**

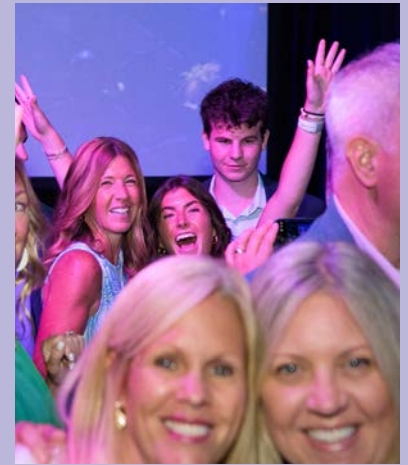
GOLF CART: **UNIBANK**

GOLF BALL: **COGHLIN COMPANIES** WORK HARD | PLAY HARD

GOLF GOODY BAG: **A.G. MILLER CO.** Precision Metal Fabricators **Anonymous**

GOLF PRIZE: **COGHLIN COMPANIES** WORK HARD | PLAY HARD **KOOPMAN** LUMBER & HARDWARE **Vincent Osterman**

GOLF BREAKFAST: **Steakhouse** Point32Health



## THANK YOU!

Every dollar raised fuels education that changes behavior and leads to early diagnoses. These events aren't just celebrations, they are catalysts for better outcomes and more survivors.



# CELEBRATING THE SUPPORT THAT SAVES LIVES



## SAVE THE DATES

SATURDAY, MAY 30

# GALA & GOLF 26

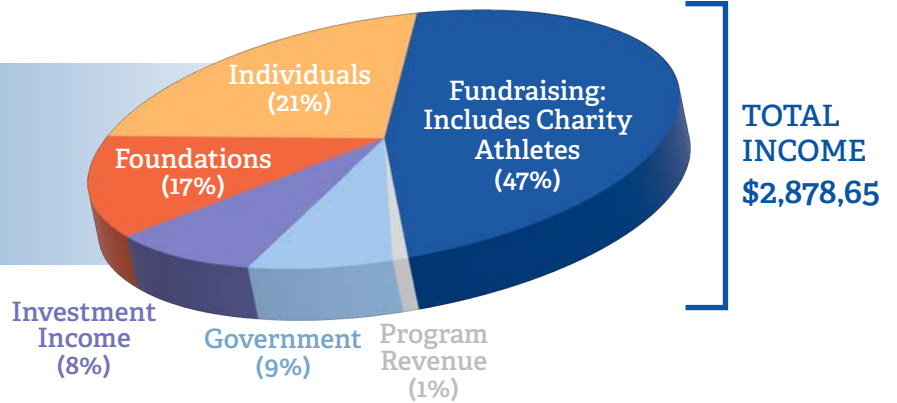
MONDAY, JUNE 1



# THE FINANCIAL PICTURE

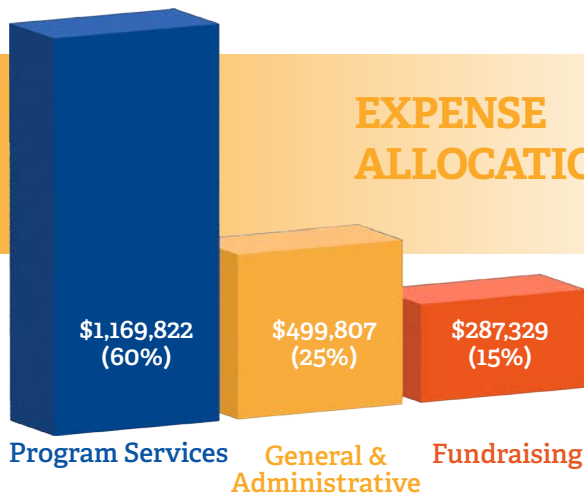
Your support ensures that DetecTogether remains strong, mission-focused, and positioned for long-term impact. In 2024, we continued to invest the majority of our resources directly into program services, while also making thoughtful strategic investments to strengthen our organization for the future. These efforts help ensure we can expand our reach, innovate our education, and accelerate early detection across the communities we serve.

## REVENUE BY SOURCE

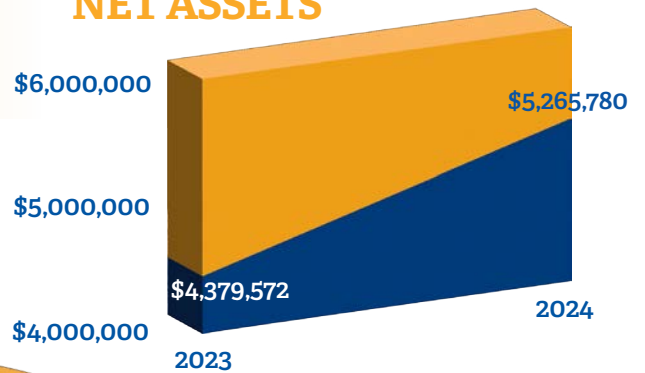


Total revenue reflects audited financial statements prepared in accordance with GAAP. Form 990 reports revenue under IRS reporting guidelines, which may differ due to the treatment of unrealized investment gains and donated services.

## EXPENSE ALLOCATION

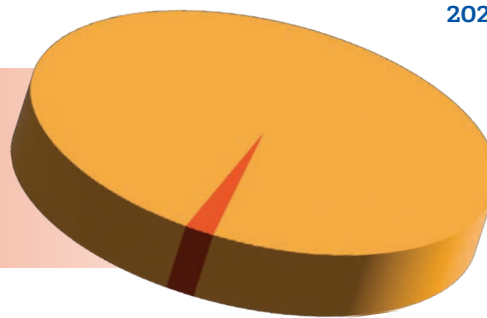


## NET ASSETS



## STATEMENT OF FINANCIAL POSITION

(TOTAL ASSETS: \$5,435,654)



Liabilities: \$169,874 (3%)

## PARTICIPANTS' IMPACT STUDY

### 3 Steps Detect® Training



## 3 Steps Detect Impact

almost **1 in 2**

Participants Detect a Health Issue Earlier

# DONORS, GIFTS, CONTRIBUTIONS

## \$200,000-\$249,999

Golf Fights Cancer

## \$100,000-\$199,999

Coghlin Family Foundation  
Irene E. and  
George A. Davis Foundation

## \$50,000-\$99,999

1A Auto Inc.  
Anne Banks  
CMP AMS LTD.  
Charles and Jane Kusek

## \$20,000-\$49,999

Steven and Annemarie Austin  
Christopher and Kimberly Coghlin  
James and Nancy Coghlin  
Davin Family Charitable Fund  
John and Robyn Davis  
Stephen and Ann Davis  
Daniel Leszczynski  
McGovern Auto Group  
Powertech Controls Co., Inc.  
Thomas and Babs Putnam  
Shoreline Audio Video LLC  
Subaru of New England  
Withstandley Family  
Charitable Foundation

## \$10,000-\$19,999

Bassick Family Foundation  
Brendon Properties River Trail LLC  
Eric and Victoria Coghlin  
Coghlin Companies Inc.  
D & S Realty LLP  
Danae and John Foley Foundation  
DCU for Kids  
John Duquette  
Eagle Cleaning Corporation  
Evolv Technology  
Fraternal Order of Eagles Grand Aerie  
George F.  
and Sybil H. Fuller Foundation  
George I. Alden Trust  
Rick and Maggie Green  
David and Kathie Huhtala  
Johnson & Johnson  
Kelleher and Sadowsky Associates, Inc.  
Last Call Foundation  
M&T Bank  
Roger and Kathy Marino  
Jeff Mastro  
Jessica and Patrick McCarty  
McCarty Associates Inc.  
Nouria Energy Corporation  
Peak Technologies  
Prescott Metal  
Regan P. Remillard Foundation  
Ruth H. and  
Warren A. Ellsworth Foundation

John and Ellen Savickas  
Michael and Carol Sleeper  
Peter and Alison Small  
Eric and Tammy Smyrl  
Technimetals  
The Dallas Foundation  
The DAVIS Companies

## \$5,000-\$9,999

Advantage Maintenance  
Colin and Carolyn Ahern  
Madeleine  
and Robb Ahlquist  
AIG  
Anixter/Wesco  
Architects of Packaging, Inc.  
Joseph and June Bafaro  
Bank of America  
Benevity.org through American  
Endowment Foundation  
Berkshire Bank  
Blue Cross Blue Shield of  
Massachusetts  
Mick Bolduc  
Boston Foundation  
Stephen and Cristianne Buchalter  
Brian and Rebecca Burns  
Kevin and Kathleen Campbell  
Chase Family Foundation  
Jim and Kristen Coghlin  
Lee Colborne and Patricia Peterleitner  
Columbia Tech  
Jill and Jonathan Conant  
Cornerstone Bank  
John DeCarlo  
and Karen Mannion - DeCarlo  
Thomas and Deborah Degnan  
Delande Supply Company, Inc.  
William and Linda Durgin  
EL Harvey  
Kenneth and Laurel Ferretti  
Fletcher Tilton PC Attorneys at Law  
Francis P. Shea Insurance Agency, Inc.  
Janet Hylland and Steve Zimmermann  
J.J. Bafaro, Inc.  
Jones Machine Company  
Michael Kane  
Jacqueline Kelliher  
Ian and Keri Levine  
Manufacturing Resource Group, Inc.  
Tina and Frank Marabello  
John and Janet McClutchy  
Mercier Electric Co., Inc.  
Metalcrafters, Inc.  
Mildred McEvoy Foundation  
Rick and Tina Miller  
Nicole and Jeremy O'Connor  
Ohio State Eagles Charity Fund  
Osterman Management LLC  
Christopher and Catherine Palermo  
Paragus Strategic IT

David and Pamela Philbin  
John Pino and Molly Miller  
Nick and Nichole Pirro  
Plus Communications  
Joshua and Mariel Rothschild  
Sager Electronics  
San Diego Foundation  
Matthew and Christina Schmit  
Mark and Erin Shapiro  
Sullivan Benefits  
Tunstall Associates Inc  
UniBank  
Unified Global Packaging Group  
United Diagnostic Services LLC  
Michael Vitale  
Greg and Pam Wilkie  
Thomas and Debbie Wilkinson  
Worcester State University

## \$2,500-\$4,999

Advantage Truck Leasing  
Eric and Christine Austvold  
Gregg Beloff and Elizabeth Masterson  
David Bucharowski  
and Dianna Glenn-Bucharowski  
Richard and Joan Caparso  
Maria and Meletios Chacharone  
Christopher Heights Assisted Living  
Mark Cohen  
William Cosgrove  
Lisa and Kent Cowgill  
DB Roberts Inc  
Peter Deckers, MD and Barbara Deckers  
Mary DeFeudis  
DT Research  
Esler Family Foundation  
Neil Feldman, DPM  
and Audrey Feldman  
Kim and Kevin Flaherty  
Flaherty Physical Therapy Inc.  
Janet Fogarty and Tim Kelley  
Foster Dykema Cabot & Partners  
G&H Photonics  
Brian and Kim Ganger  
J. Michael and Brittany Grenon  
John and Donna Grondin  
Hatch Manufacturing Solutions  
HC Risk Reduction Inc DBA Redline  
First Responder Gear Cleaning  
John and Kathryn Heald  
Chrystine and Mike Heier  
R. Lee and Jane Hite  
Jack and Jeanette Howard  
Jeff and Tracy Johnson  
Scott and Renee Johnson  
Steve and Kate Kapusta  
William and Kathleen Kelleher  
Thomas Kokosinski  
Frank and Barbara Kurzdorfer  
Tanya Kurzdorfer Wilson

Landmark Associates  
General Contracting  
Gerri Lorusso  
Judi Mancini  
Richard and Korinne Manders  
Nick McDonald  
National Christian Foundation Chicago  
Todd and Amy O'Connell  
Brian Payne  
Point32Health  
Kenneth and Irene Polito  
Providence Sales Associates LLC  
Edward and Kathleen Reilly  
Richard P. Kahn Foundation  
Richard and Alison Ricker  
Rockland Trust Bank  
Jim Sacco  
Scott Electronics Inc  
Francis and Carolyn Shea  
St. Pierre & St. Pierre, P.C.  
The Hillis Family Foundation Inc.  
Kelley and Tony Tyan  
James and Maureen Umphrey  
White Companies Charitable Trust  
Willy's Steakhouse Grill & Sushi Bar  
Mark and Rachel Zides

## \$1,000-\$2,499

Amvets Auxiliary Post 52  
Anonymous  
Antonacci Family Foundation  
Athol Savings Bank  
Atlas Distributing, Inc.  
Joe and Kristin Bafaro  
Bank of America Charitable Foundation  
Jack and Susan Bassick  
David Belsito  
Patricia and David Benson  
Tina Bilazarian  
Timothy and Andrea Briggs  
Todd and Jo-Ellen Brodeur  
James and Paula Buonomo  
Kelley and Ron Burgess  
Bea Burt  
John Carroll  
Chubb  
Cold Harbor Brewing Company  
Walter and Brenda Conlin  
Kristen Corrigan  
Tom and Nancy Creed  
Curry Printing  
Michael and Ellen Davin  
Peter and Maura DawsonGene  
and Julianne DeFeudis  
Delta Sales Inc.  
Lesia and Frank DeMaria  
Louis and Dona DeSantis  
Mark and Jan Donahue  
Envestnet

**\$1,000-\$2,499 (cont'd)**

Joe and Danielle Falcone  
 William Fanning  
 John and Laure Farrell  
 Ryan and Stephanie Fattman  
 Debra and Dan Floyd  
 Flynn's Truck Plaza LLC.  
 Daniel Foley  
 Sarah and Ryan Foley  
 Chris and Laurie Garrison  
 Dave and Sherry Geldart  
 Robert and Bethann Gilfeather  
 GlaxoSmithKline Foundation  
 Phyllis Godwin  
 GreenLyte Group  
 David and Catherine Griffin  
 Bill Guerin  
 Sam and Deb Haines  
 Jim and Ally Hastie  
 David Hatch  
 Kevin and Lee Holmes  
 James and Nancy Holston  
 Paul and Margaret Huhtala  
 J R Glass Inc.  
 Lisa Kittredge Peddar  
 Jill and Dave Kurzontkowski  
 Ronald Ladner  
 Cheryl and Joe Lapriore  
 Tricia and Douglas Laursen  
 Susan and Richard Leahy  
 James Levine, MD and Maria Levine  
 Sam Lotuff and Christy Williams, MD  
 Nancy and Harris MacNeill  
 Brad and Traci Macomber  
 Daniel and Kirsten Mahar  
 Kenneth and Tanya Marderosian  
 Ron and Leslie Masiello  
 Megan Mead  
 Matthew Muller  
 Linda Nelsen  
 Margo and Matthew O'Connor  
 Thomas and Irina O'Hara  
 PayPal Giving Fund  
 Deborah Penta  
 Elizabeth and Alan Peppel  
 Joseph Persky  
 Cynthia Petrow  
 Polito Development Corporation  
 Powers Industrial and  
 Safety Company, Inc.  
 Protech Laser  
 Mark and Kathy Puccio  
 Richard and Marla Pyle  
 Jason and Lourdes Rahn  
 Arthur and Debra Remillard  
 Rita Resha  
 Michael and Robin Riley  
 Joseph and Bridget Robertson  
 John and Jill Romney  
 Rotary Club of Groton-Pepperell  
 Jason and Angela Rudman  
 Joseph and Joanne Salois  
 Robert and Dawn Seiple

Bersan and Eva Shqina  
 Gurbachan Singh, MD and Lexi Singh  
 John Soares and  
 Indie Ghahremani - Soares  
 St. Gabriel the Archangel Parish  
 Sterling Concrete  
 Stowe and Degon  
 Eric Suher  
 Johanna Sullivan  
 Sweeney  
 Shams Talib  
 The Wonderful Company  
 E. Paul and Kathy Tinsley  
 Tonna Charitable Trust  
 Transworld Marketing Group  
 Michael and Denyse Turpin  
 Turpin Sales & Marketing, Inc.  
 Zachary Twitchell  
 Craig and Jean Twohey  
 Dorothy Ungerer  
 Michael and Bridget Welch  
 Wellington Management Company, LLP  
 Andrew White  
 Mark and Kathleen Whitney  
 Wood Sales Corporation

**\$500-\$999**

Benjamin Adner  
 Ronald Affsa  
 Applied Interactive  
 Mark and Maria Baker  
 Michael Baron  
 Gary and AnnMarie Bodge  
 Michael Bradbury  
 Tony Briney  
 Buckeye Lake Marina  
 Butcher & Company, LLC  
 Jodi Carlstrom  
 Carr Family  
 Chris Cawley  
 Jeanne Chamberland  
 Tony and Annie Chiarelli  
 Coghlin Services Fund  
 Cook Professional Resources, Inc.  
 Robert and Sherri Cotter  
 Cryogenic Institute of New England, Inc.  
 Susan and Darryl Cyr  
 Carol Davis  
 Gino DeFeudis  
 Ed Driscoll  
 Jenique and Eric Edelstein  
 Michael and Sue Engel  
 Enterprise Cleaning Corporation  
 Lew Evangelidis  
 Christine and Wayne Ferrari  
 Fidelity Bank  
 Brian and Sheryl Fontaine  
 Robert and Stephanie Franklin  
 Janice and Mark Fuller  
 Dave Fullerton  
 Goldman, Sachs & Co.  
 Robert Grady  
 David Griffin  
 Lou and Wendy Griffith

Randy Guy  
 Abraham and Linda Haddad  
 Matt Hamilton  
 Steven Hansen and Diedre Quealey  
 Kelsey Lynn Herring  
 Ann-Marie Hollis  
 Derek Holt  
 Timothy and Paula Holt  
 Phil Holtberg  
 Amanda Jackson  
 Sydney and Susan Jones  
 Ann Keiser  
 Ann-Marie Kelly  
 Olga and George Konomi  
 Chris and Krista Kowal  
 Tai Lee  
 Kathryn Lijoi  
 Michael Littlewood  
 Charlie Manoog  
 and Moira Moynihan-Manoog  
 Paul and Lynn Marks  
 Johanna McCarthy  
 Deborah and Steven Migridichian  
 Matthew and Caroline Mrva  
 Danielle Muller  
 Barbara Murphy  
 Thomas and Kathleen Myshrrall  
 Daniel Newcomb  
 Mostafa Noury and Laurie Charboneau  
 Julie and Alan Osetek  
 Marc Pearlstein  
 Joan and Alan Perrault  
 David and Marlene Persky  
 Robert and Lyn Petricca  
 Mike and Rachael Phelan  
 William and Lana Pieczynski  
 Ann Ratte  
 Kyle Read  
 Jeff Roberts  
 Colin Robinson  
 Dan Robinson  
 John and Deborah Scanlon  
 Paul Scully  
 Richard and Karen Shahtanian  
 Jayne Sharpe  
 Tom and Madelyn Shields  
 Southbridge Sheet Metal Works, Inc.  
 Elaine Supinski  
 Frank Thomas  
 William Thompson  
 Alexis and Osiris Vallejos  
 Walco  
 Jason Waldman  
 Robert and Marilyn Weiss  
 MJ White  
 Steve and Nancy Whitney  
 Lisa and Jeff Young  
 Jim Zinkus  
 Peter and Tanya Zinkus

**In Kind Donors**

A.J. Tomaiolo's Restaurant  
 ABC Network  
 Mr. Mark Aldrich

Arturo's Ristorante  
 Atlas Distributing, Inc.  
 Bet the Farm Winery  
 Black Point Inn  
 Bollus Lynch LLP  
 Boston Beer Company  
 Boston Celtics  
 Boston Red Sox  
 Cakebread Cellars  
 David Camera  
 David and Camille Carlstrom  
 Cellar Bar & Grille  
 Angela Cheng-Cimini and  
 Michael Cimini  
 Chick-fil-A  
 Christopher Heights Assisted Living  
 Clintons Bar & Grille  
 James and Nancy Coghlin  
 Jim and Kristen Coghlin  
 Coghlin Companies Inc.  
 Cornerstone Bank  
 Damiani Wine Cellars  
 Peter Deckers, MD and Barbara Deckers  
 Michael Detarando  
 DetecTogether  
 Dexter-Russell, Inc.  
 DT Research  
 El Basha  
 First Responder Consultant  
 Foley Motorsports  
 Fuel for Fire  
 Hazelnut Kitchen  
 Hot Set Hair Studio  
 Jack and Jeanette Howard  
 David and Kathie Huhtala  
 Janet Hylland and Steve Zimmermann  
 Imperial Distributors, Inc.  
 Jenny B. Companies LLC  
 John Keenan  
 Knapp Winery  
 Koopman Lumber  
 Life Is Good  
 Trish and Brian Lynch  
 Main Street Drivers  
 Mill Street Inn  
 Suzanne and Robert Nethercote  
 Niche Hospitality Group  
 Scott and Susan Notargiacomo  
 Todd and Amy O'Connell  
 Olympic Trophy  
 Palmer Motorsports Park  
 Pegasus Limousine  
 Point32Health  
 Polar Beverages  
 Polyvinyl Films Inc.  
 Purple Rose Home  
 Quality Beverage LP  
 Rancho Corona  
 Reluctant Panther Inn  
 Romaine's  
 Lisa and Steven Sacchetti  
 Sheldrake Point Winery

Allan Shinohara  
Spectrum Enterprises  
Starbucks  
Tauck  
The Black Walnut Bed & Breakfast  
The Haven Country Club  
The Lodge at Spruce Peak  
The Original Bradford Soap Works  
Paul Thomas  
Tito's Handmade Vodka  
Judith Tonelli-Brown  
Total Wine & More  
Tree House Brewing Company  
VBT  
Wachusett Mountain  
White Cottage  
Willy's Steakhouse Grill & Sushi Bar  
James and Mary Wilson  
Woodstock Inn & Resort  
Worcester Restaurant Group  
Yama Zakura Corp

### **Tribute Gifts (in honor of)**

**Erin Blakeney, PhD, RN**  
Lea Kilraine

#### **Coghlin Companies**

Sullivan Benefits on behalf of  
Coghlin Companies

#### **James W. Coghlin, Sr.**

Mary and Bob Abair  
Deborah Bieri  
Tina Bilazarian  
William Bradford  
Kevin and Kathleen Campbell  
Angela Cheng-Cimini  
and Michael Cimini  
Christopher and Kimberly Coghlin  
Colby Coghlin  
Haley Coghlin  
The Davin Family  
John DeCarlo  
and Karen Mannion-DeCarlo  
Peter & Kristen Delphos  
John and Joette D'Esposito  
Kevin and Carol Early  
Patrick Egan and Joanne Ceccarelli-Egan  
Michael and Sue Engel  
Esler Family Foundation  
Millie Fernandez  
Kevin and Jadine Finch  
Paul and Jean George  
Matt and Holly Giza  
Arthur and Rae Glispin  
Elizabeth Goldfield  
John & Katie Heald  
James Hollis  
Linwood & Judy Hudson  
Sydney and Susan Jones  
James Kelliher  
Mr. Robert Logan  
Nancy and Harris MacNeill  
Fran and Susan Madigan  
Judi Mancini  
Margaret Marchese  
Christopher and Carla McCall  
Tom and Pam Mitchell

Lorraine Montuori  
Matthew and Caroline Mrva  
Ken & Beryl Notargiacomo  
Thomas and Irina O'Hara  
Olympic Trophy & Awards, LLC  
John and Judy Padavano  
Anonymous  
Patricia Pearson  
Maura and TJ Power  
David Pratt  
Ed and Kathleen Reilly  
John and Jill Romney  
Joseph and Joanne Salois  
Charles and Marcia Saltkin  
Michael R. and Ellen C. Sandler  
Family Foundation  
George & Rosanna Sogigian  
Paul and Helen Sullivan  
Roderick St. Pierre  
Gary and Kim Thibeault  
Marilyn Thompson  
E. Paul and Kathy Tinsley  
Edward Tolan  
Inge Trzoniec  
David Vitwar  
Jerry and Karyn Waxman  
Maryellen & Mark Williamson  
Lisa and Jeff Young

#### **Jim and Nancy Coghlin**

CF Landscaping  
Susan and Darryl Cyr  
Jenique and Eric Edelstein  
Clifford and Jan Fountaine  
Tricia and Douglas Laursen  
Ann Ratte  
Tammy Smyrl  
Dorothy Ungerer

**Jim Sr & Jim Jr Coghlin**  
Michael and Bridget Welch

#### **Jim Fagan**

Joseph and Jill Milano

#### **John M. Heald**

Christopher and Kimberly Coghlin

#### **Lily Sullivan**

Timothy Vanderlinden

#### **Michael Baron**

Anonymous

#### **Rick R. Green**

Jason Crosby

#### **Sabina Simon**

Stanley and Etta Shapiro

#### **Sandy Danault**

Lisa and Jeff Young

### **Tribute Gifts (in memory of)**

#### **Jean C. Barbera**

Michael Barbera

#### **Seth Bilazarian**

Tina Bilazarian

#### **Robert Blute MD**

Kara Harris  
Michael Warner

#### **Michael Bodge**

Brandon Auger  
Frederick and Karen Bodge  
Gary and AnnMarie Bodge  
Rich and Cathy Cayer  
Diana and Michael Cipro  
Joanna Clark  
Robert and Patricia Comeau  
David and Mary Jane Cordella  
Robert and Christine Cuccaro  
Robert and Deborah Dral  
Christine Gemme  
James and Evelyn Heffernan  
The Hennigan Family  
Mark Lambert  
Peter and Janet Mancuso  
Suzanne and Don McAllaster  
Margaret McConaghy  
Kathleen and James O'Donnell  
Susan O'Leary  
Betsy and Tony Spalatro  
Lauren Spencer  
Emily and Ben Tebo  
Joe and Elizabeth Vecchio  
Mark and Ann-Marie Wilson

#### **Beverly Bourque**

Lindsay Baldassari  
Christopher and Kimberly Coghlin  
Laura Nesbit

#### **Philip W. Callahan**

Charles and Marcia Slatkin

#### **John "Chuck" Caputo**

Patrick and Kristine Maloney

#### **Henry Carr**

Christine Vulopas  
Mark Fitzpatrick

#### **Eugene Casillo**

Judi Mancini

#### **Dan Davis**

Andrea Castinetti

#### **John and Judith Deckers**

Peter Deckers, MD  
and Barbara Deckers

#### **Scott Foley**

Julie Barbash

#### **Mrs. Mary P. Fulginiti**

Michael and Joanne Fulginiti

#### **Gerdi**

Inge Trzoniec

#### **Deb Hokkanen**

Melinda and Ronald Johnson

#### **Sam Hokkanen**

Athol Savings Bank  
Irene Caruso  
James and Christina Ciociolo  
Susan Kalil-Collins and James Collins  
Columbia Tech  
Melinda and Ronald Johnson  
Valerie Kerxhalli  
Alison Money  
Julie Walsh  
Daniel Zona

#### **Janine Holston**

Jim and Nancy Holston

#### **Jacqueline Coghlin Kelliher**

Jacqueline Kelliher  
Tricia A. Laursen  
Judi Mancini

#### **Thomas Kelleher**

Judi Mancini

#### **Gertrude Knoll**

Kathleen Leary

#### **Jan MacInnis**

Ronald MacInnis

#### **Debbie Mancini Wharff**

Judi Mancini

#### **Don Mancini**

and **Debbie Mancini Wharff**

Judi Mancini

#### **Don Mancini**

Judi Mancini

#### **Donna Mancuso**

Joseph Mancuso

#### **Louis Marchese**

Margaret Marchese

#### **Samuel Marks**

Annette Marks

#### **Elizabeth A. McDonough**

James and Nancy Coghlin  
Caroline Heffernan  
Joan Perrault and Susan McDonough

#### **Karen Ann (O'Leary) McGrath**

David McGrath

#### **Marlene Miller**

Advantage Maintenance, Inc.

#### **Robert Pasquale**

Trish and Brian Lynch

#### **Beverly Pratt**

Protech Laser

#### **Joe Resha**

Rita Resha

#### **Ibolya Eva Ripsz**

Beth Buchanan  
James and Nancy Coghlin  
Nancy Nichols

#### **Judith L. Sbrogna**

Christopher and Kimberly Coghlin  
Kara Harris  
Albert and Maggy Maykel

#### **Eileen Scannell**

Tricia A. Laursen

#### **Pat Shulman**

Jay Brenner

#### **Matt Smith**

Megan Condron Smith

#### **Barre Tozloski**

Lisa Peddar and Family

#### **David and Mark Ungerer,**

**Debbie Mancini Wharf**  
**and Kim Ashbusherry**  
Melinda and Ronald Johnson

#### **Nancy Walnista**

Kenneth and Beryl Notargiacomo

#### **Melanie Wilson**

Jayne Sharpe

#### **Scott & Paul Zenaro**

Ronald and Carol Zenaro



Get into  
the swing of  
early cancer  
detection  
with  
3 Step Detect.®

Learn  
how to  
save your  
own life.

Find Out More:



[qrco.de/3SD-AR24](https://qrco.de/3SD-AR24)

**DetecTogether**

SAVING LIVES THROUGH  
EARLY CANCER DETECTION

53 Otis Street  
Westborough, MA 01581  
508-869-5200  
[DetecTogether.org](https://DetecTogether.org)